



Community Wellbeing Dashboard

Ontario Municipal Social Services Association Forum

September 25, 2024



RURAL ONTARIO
INSTITUTE

Vision, Voice and Leadership

About ROI

The **Rural Ontario Institute (ROI)** is a charitable organization.

Our mission is to build **vision, voice** and **leadership**.

ROI envisions **thriving & vibrant** rural communities.

- ❖ Develop leaders
- ❖ Connect communities
- ❖ Inform decision makers

Data-driven tools for rural decision making:

- Rural Housing Information System
- Rural Community Wellbeing Dashboard



Overview



OBJECTIVES

- Improve access to information and evidence for rural decision making
- Empower people to tell a holistic story about all aspects of community wellbeing
- Adopt a standardized approach that can be applied across Canada (CSA Standard)

OUTCOMES

- Provide data and indicators via an interactive, digital dashboard
- Mobilize knowledge and build capacity to help rural communities use the tool
- Test the performance of the CSA Standard and provide feedback for standard revision

PARTNERS

- Ontario Trillium Foundation
- Ontario Ministries of Agriculture, Food, Agribusiness and Rural Affairs
- York University
- Rural Ontario Municipal Association
- EcoCanada

Dashboard Purpose



Translate data into understanding

- Establish baselines
- Identify issues and priorities for change
- Find communities who may be experiencing similar challenges and opportunities

Transform understanding into action

- Develop data-driven policies, programs and initiatives
- Monitor progress over time
- Share stories and celebrate successes

Examples of potential uses:

- Develop, review, or revise plans and programs, including Community Safety and Wellbeing Plans, service delivery, and climate action plans.
- Develop business cases for funding applications.
- Initial data gathering for reporting or briefing purposes.
- Starting point for focusing investment for further research or data collection.

CSA Standard R113-22



- New standard released in 2022, commissioned by the Standards Council of Canada
- Provides a set of ~120 rural wellbeing indicators grouped into 7 broad categories
- Focus on readily available data, with common definitions and methods
- Over-reliance on traditional socio-economic indicators and data
 - Demographics, Economics, Housing
- Significant data gaps for other indicator categories
 - Health, Society, Environment, Institutions
- Identified additional indicators to address gaps

Data Champions



Volunteer focus group is helping to:

- ensure that the dashboard is relevant, useful, and user-friendly
- validate indicator selection
- identify data sources and proxy indicators
- develop use cases
- raise awareness of this project

Town of Goderich

City of Temiskaming Shores

Tay Valley Township

Front of Yonge Township

Township of Whitewater Region

Municipality of North Grenville

Huron County

Bruce County

Oxford County

Elgin County

Haliburton County

Leeds, Grenville and Lanark District Health Unit

Centre for Workforce Development

Sarnia Lambton Workforce Development Board

Timiskaming Health Unit

Workforce Planning Board of Grand Erie

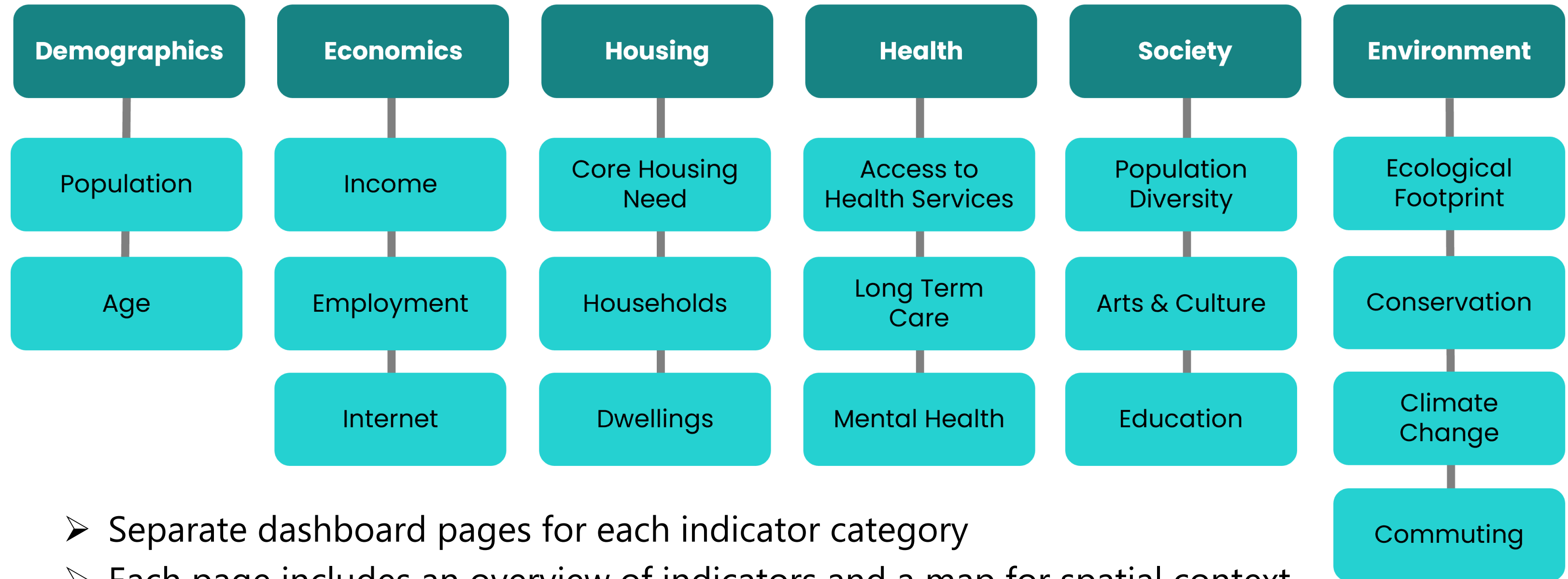
Ontario Federation of Agriculture

Ontario Ministry of the Solicitor General

Four County Labour Market Planning Board

Ontario Ministries of Agriculture, Food, and Agribusiness, and Rural Affairs

Dashboard Structure



- Separate dashboard pages for each indicator category
- Each page includes an overview of indicators and a map for spatial context
- Thematic indicator groupings help to tell a story about community wellbeing
- 60+ indicators and 10+ data sources
- Indicators will be updated and reviewed annually

Dashboard Demo

➤ https://www.youtube.com/watch?v=ltTI5EI_aGc

Community Wellbeing Dashboard - User Guide

ROI RURAL ONTARIO INSTITUTE [DONATE](#) Search [SUBSCRIBE](#)

[About](#) [AALP](#) [Knowledge Centre](#) [Wellbeing](#) [Programs](#) [Media](#) [Events](#) [Join the Community](#)

(All)
 Algoma District
 Brant County
 Bruce County
 Chatham-Kent
 Cochrane District
 Dufferin County
 Durham Region
 Elgin County
 Essex County
 Frontenac County
 Greater Sudbury / Grand Sudbury
 Grey County
 Haldimand-Norfolk
 Haliburton County
 Halton Region
 Hamilton
 Hastings County
 Huron County
 Kawartha Lakes

Cancel Apply

(All)

Communities
(All)

Community type
(All)

[CLEAR FILTERS](#)

Access to health services Long term care Mental health

Provides an overview of all the indicators in the health category. Click on the other pages to view indicators by different regions. These indicators can help communities develop plans and programs to improve access to health services, reduce wait times for long term care, and provide support for mental health.

Indicator: Number of long term care spaces

City	Number of long term care spaces
Toronto	15,067
Ottawa	4,858
Hamilton	3,919
London	2,630
Mississauga	2,333
Brampton	1,641
Greater Sudbury	1,451
Windsor	1,420
St. Catharines	1,296
Burlington	1,288
Kitchener	1,277
Thunder Bay	1,221

© 2024 Mapbox © OpenStreetMap contributors

2:33 / 6:24 • Choosing a region > Scroll for details



Questions?

Danielle Letang, ROI, Manager, Data Strategy
dletang@ruralontarioinstitute.ca

www.ruralontarioinstitute.ca/wellbeing



Vision, Voice and Leadership